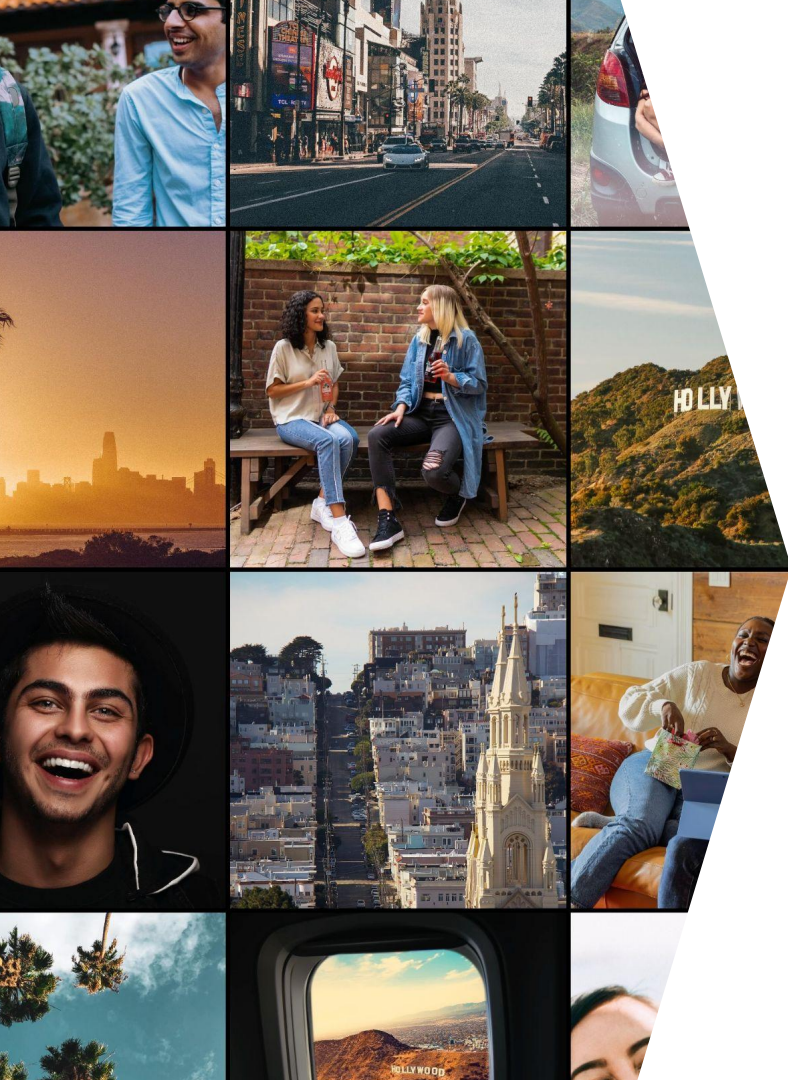




+ sending.
CHURCHES

Church Planting Network



About us

Why We Exist?

We exist to catalyze the establishment of churches throughout California. Our mission is to Equip, Train, and Fund aspiring pastors committed to initiating new churches, sharing the message of Jesus, performing baptisms, and fostering discipleship.

Why Join Sending Churches?

Together, we thrive! Why tread the path of ministry in solitude when you can join forces with fellow pastors, uniting within a network that shares a common vision of the Gospel to reach those who have yet to hear the name of Jesus.

www.sending.church

Our Program

Jesus said, "As you sent me into the world, I have sent them into the world. - John 17:18

APPLY
101

Get Assessed

TRAIN
201

Monthly Training

COACH
301

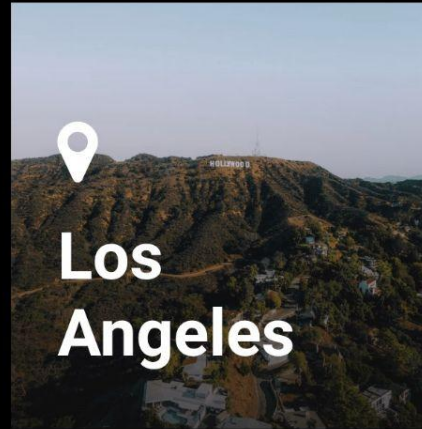
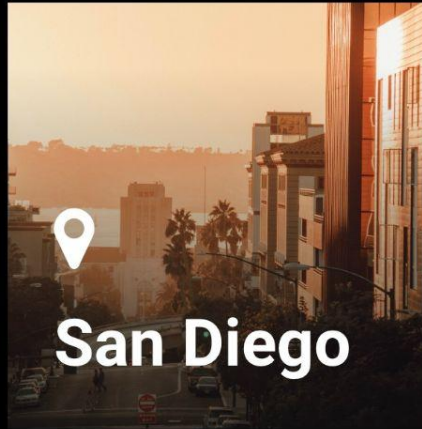
1-on-1 Coaching

LAUCH
401

Start Church

Select A Location

Reaching California for Jesus Christ



1) Apply

Engage in a conversation with us today! Schedule a call by expressing your interest in church planting. During this call, you can freely ask questions and share your passion for starting a Jesus-centered church. It's a dynamic opportunity for us to connect, understand your vision, and provide insights into the church planting process.

Following our conversation, if you're ready to take the next step, you can then fill out a straightforward Church Planting Application online. This application will capture the essence of our discussion and help guide the next phases of your journey in establishing a vibrant church community.





2) Train

Embark on a transformative 1-year training program, where our Church Planters engage in monthly in-person experiences, each spanning a full day. Over this comprehensive 12-month journey, expert teachers, pastors, and fellow Church Planters will provide invaluable guidance and equip you with essential strategies for launching and nurturing your church.

These include:



- | | |
|----------------------|----------------------|
| 1.) The Calling | 7) Church Government |
| 2) The Team | 8) The Ministries |
| 3) The Location | 9) Preaching |
| 4) The Funding | 10) Family |
| 5) Marketing | 11) Multiply |
| 6) Sunday Experience | 12) The Launch |



3) Coach

Church planters get assigned a Coach who will walk with you throughout the church planting process. This coach will be your prayer support and someone you can ask personal and church related questions as you build your Local church.

Your Coach is a Pastor and have also been through the church planting experience so you are in good hands.





4) Launch

Having dedicated a year to building your core team, securing your location, securing funding, and forging key partnerships, you are now poised for the grand launch of your church.

As you take this significant step, our ongoing support remains steadfast. You'll also become part of a remarkable community comprising other vibrant, life-giving churches. And in due course, you'll have the opportunity to launch more churches, all for the glory of God.





SENDING CHURCHES is a Church Planting Network, sending out a new generation of Pastors to reach California for Jesus.

OUR LOCATION: Newport Beach, CA 92603

CONTACT: jordan@daily.church

POWERED BY:

||>> SEND Network